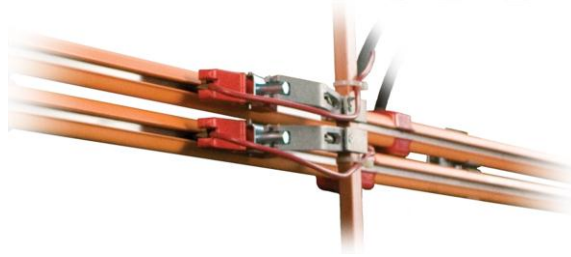


# Insul-8

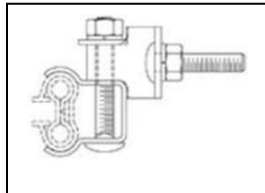
6/4/2012



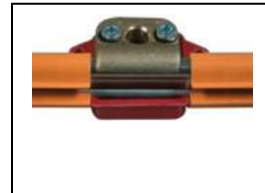
Insul-8 Components used on early; PTS, and Trac-A-Rac cars



Bar  
Insul-8 # 11227  
Colmac # 201755



Clamp  
Insul-8 # 11263  
Colmac # 201750



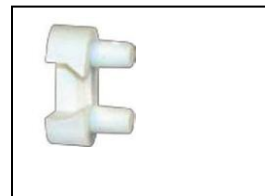
Power Feed  
Insul-8 # 11289  
Colmac # 201751



Guide  
Insul-8 # 11292  
Colmac # 201752



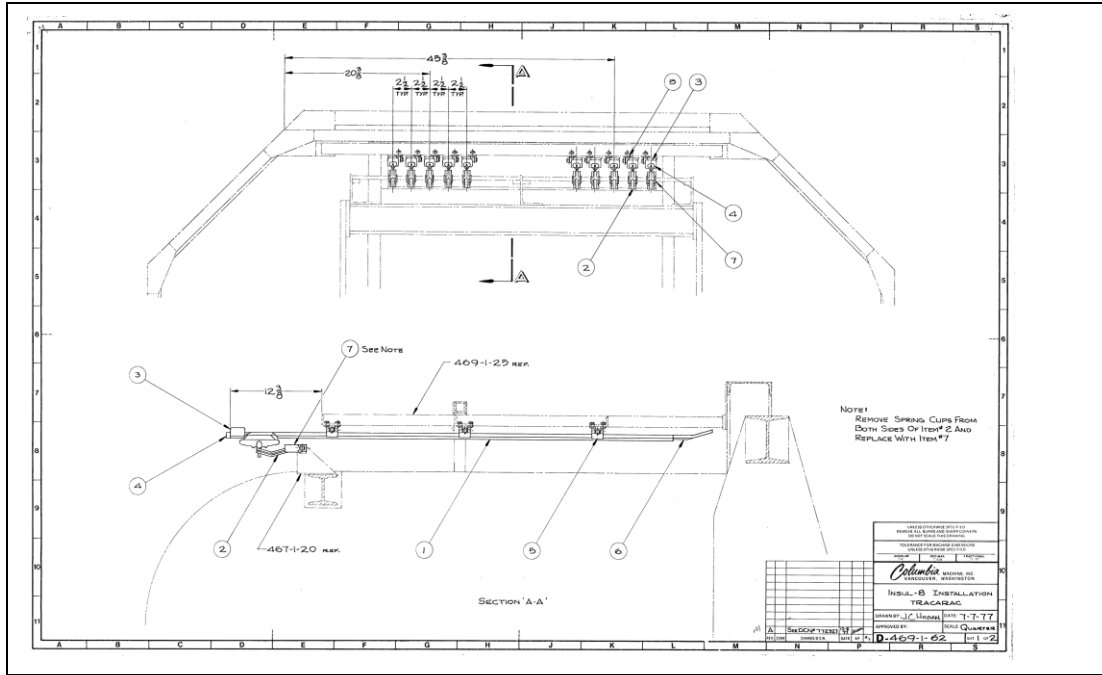
Shoe  
Insul-8 # 12295  
Colmac # 201754



Cap  
Insul-8 # 11295  
Colmac # 201753

Note: Bar comes in one 10 foot length from vendor,  
Trac-A-Rac bars are cut to 5 foot length  
PTS bars are cut to 11 inch length

Typical installation on "Trac-A-Rac"  
Reference drawing #469.1.62



Typical Installation on "PTS"  
Reference drawing #465.2.9

